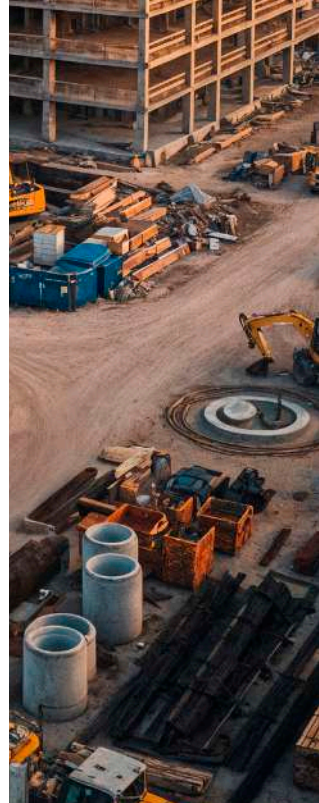
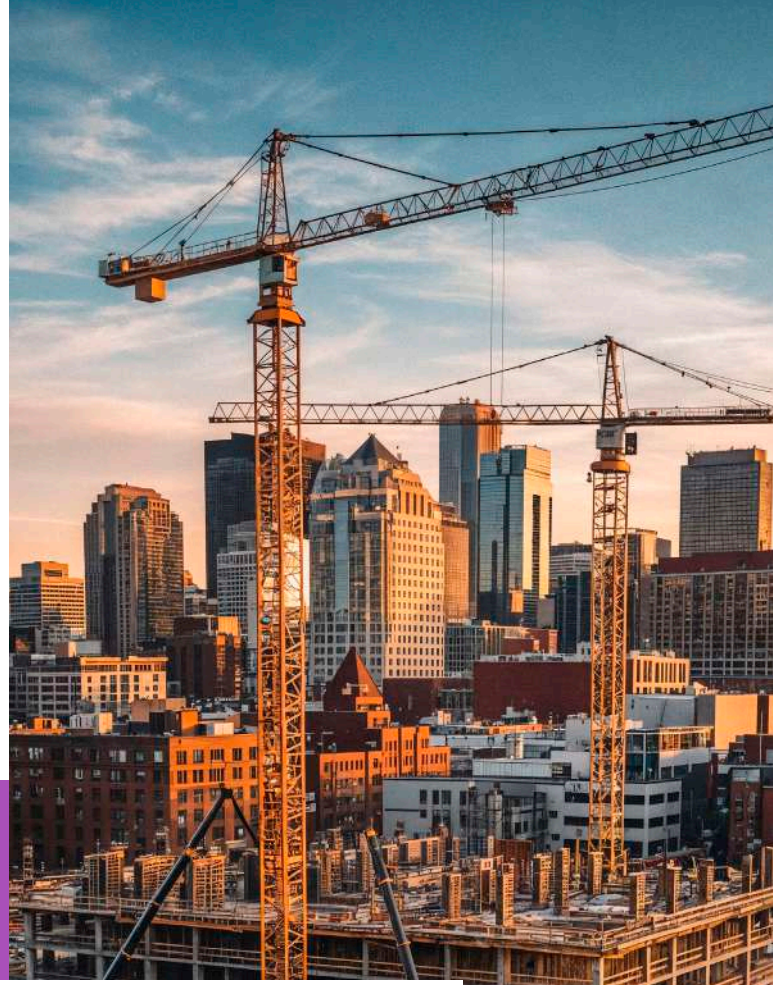


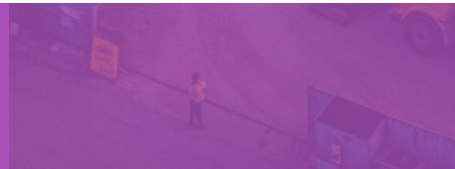


**BASELINE**  
CONSTRUCTION SOLUTION  
شركة باسلاين كونستراكشن سولوشن



# Company Profile

Baseline Construction Solution is a trusted construction and engineering company delivering reliable, high-quality solutions across residential, commercial, and industrial sectors, specializing in infrastructure, MEP, manpower, equipment rental, and facility services.



# Building Excellence Together



“

**Delivering reliable construction & engineering solutions through innovation, and commitment to quality, & safety.**

Welcome to Baseline Construction Solution, a trusted partner in delivering construction, engineering, and infrastructure services. We specialize in providing integrated solutions across residential, commercial, and industrial sectors, ensuring every project is executed with efficiency, and strict adherence to safety standards.

Our experienced team combines technical expertise with modern methodologies to meet diverse client requirements and project complexities. From initial planning and design support to construction and maintenance, we focus on delivering cost-effective results. At Baseline Construction Solution, our commitment to excellence, and long-term partnerships drives us to consistently exceed client expectations and contribute to successful project outcomes.

# Table Of Contents

About Company	04
General Construction	06
Infrastructure Works	07
Equipment Rental	08
Manpower Supply	09
MEP Services	10
Maintenance Services	12
Facility Services	13
Engineering Services	14
Support Services	15

Aligned with Visio 2030

# About Company

**Delivering construction, engineering, and infrastructure solutions**

Baseline Construction Solution is a reliable construction and engineering company delivering high-quality services across residential, commercial, and industrial sectors. Built on professionalism, integrity, and technical expertise, the company provides end-to-end solutions including construction, infrastructure development, MEP works, manpower supply, equipment rental, and facility maintenance.

With a team of experienced engineers, skilled workforce, and dedicated project managers, every project is executed with precision, efficiency, and strict adherence to safety and quality standards. The company adopts modern construction practices and



innovative approaches to meet evolving industry demands while ensuring cost-effectiveness and timely delivery.

Committed to long-term client relationships, Baseline Construction Solution focuses on understanding client needs and exceeding expectations, delivering sustainable, reliable, and impactful solutions that contribute to successful project outcomes.



**A trusted construction partner delivering innovative, reliable, and cost-effective engineering and infrastructure solutions through expertise, quality craftsmanship, and strong commitment to client satisfaction.**



# Vision & Mission

Driving Growth  
Through  
Purposeful  
Engineering  
Excellence

## Our Vision

To become a leading construction and engineering company delivering innovative, sustainable, and high-quality solutions, setting benchmarks in safety, efficiency, and client satisfaction while contributing to modern infrastructure development and community growth.

## Our Mission

To provide reliable, efficient, and cost-effective construction and engineering services through skilled professionals, advanced technologies, and best practices, ensuring timely delivery, high safety and quality standards, and long-term partnerships built on integrity and excellence.

# General Construction

Baseline Construction Solution provides high-quality construction services for residential, commercial, and industrial projects. We manage every phase with precision, ensuring structural integrity, safety compliance, and timely delivery. Our team uses modern techniques and industry best practices to deliver durable, cost-effective structures. From small developments to large projects, we focus on meeting client requirements while maintaining strict quality standards and ensuring safe, efficient project completion.



## Delivering Strong, Reliable, and High-Quality Building Solutions

- ✔ Construction of residential villas, multi-story buildings, and commercial complexes with high-quality materials.
- ✔ Execution of industrial structures including warehouses and workshops designed for operational efficiency, & safety compliance.
- ✔ Structural works covering foundations, columns, and slabs using advanced techniques to ensure stability & safety.



# Infrastructure Works

Baseline Construction Solution delivers comprehensive infrastructure development services, supporting urban and industrial growth. We specialize in building essential systems that ensure functionality, durability, and long-term performance, while maintaining strict compliance with engineering standards and project specifications for efficient infrastructure solutions.



## Building Reliable Infrastructure for Sustainable Development

Our expertise covers a wide range of civil works, including roads, drainage systems, and underground utilities. We adopt modern construction practices and advanced equipment to ensure precision, durability, and efficiency in every project. Our team is committed to delivering infrastructure solutions that support long-term functionality, & environmental sustainability.



Construction of roads, pavements, and interlocking surfaces using advanced machinery and quality materials to ensure durability, smooth functionality, and long-term resistance to environmental and operational stress conditions.



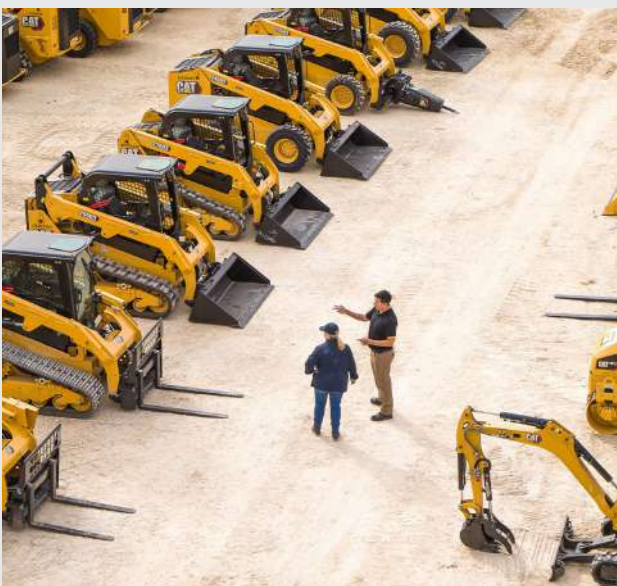
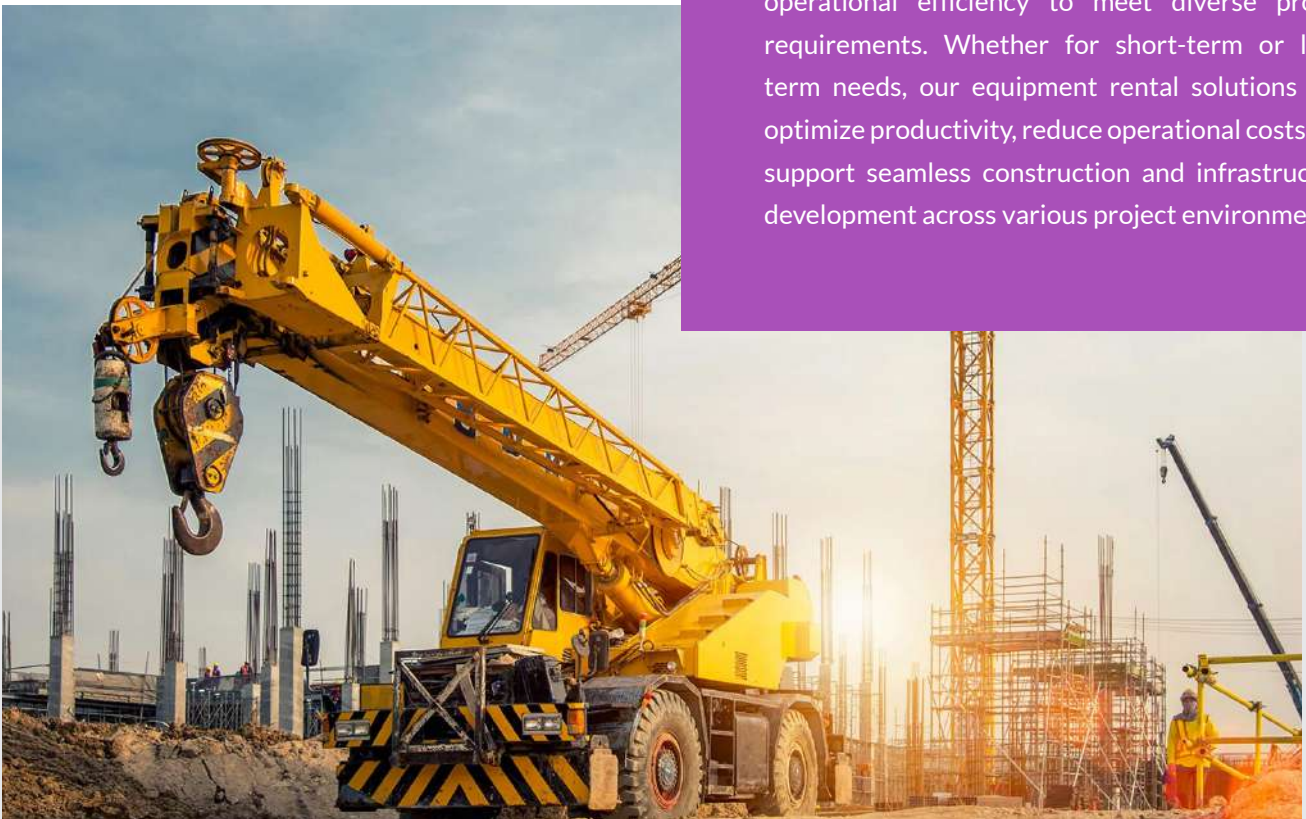
Development of stormwater drainage systems and underground utility networks designed to effectively manage water flow, prevent flooding, and support sustainable urban and industrial infrastructure systems.



Site preparation services including excavation, grading, and backfilling executed with precision to create stable foundations and ensure readiness for construction and infrastructure development projects.

# Equipment Rental

We offers a wide range of modern construction equipment on rental to support efficient project execution. Our fleet includes advanced, machinery operated under strict safety and performance standards. We ensure availability, reliability, and operational efficiency to meet diverse project requirements. Whether for short-term or long-term needs, our equipment rental solutions help optimize productivity, reduce operational costs, and support seamless construction and infrastructure development across various project environments.



## Equipment Types:

- Excavators and backhoes for efficient earthmoving, digging, and site preparation operations.
- Loaders for material handling, loading, and transportation across construction project sites.
- Cranes and lifting equipment for safe and precise heavy material positioning.
- Compactors and rollers for soil compaction and road surface stability enhancement.
- Scaffolding systems ensuring safe access and support during elevated construction activities.
- Formwork solutions for accurate concrete shaping and efficient structural construction processes.

# Manpower Supply



We provide skilled and unskilled manpower to support construction and engineering projects, ensuring productivity, efficiency, and seamless execution through reliable workforce solutions tailored to meet diverse project requirements.

## Technical Workforce

Our technical manpower includes qualified professionals with expertise in engineering, supervision, and specialized construction trades. They ensure project accuracy, compliance with standards, and efficient coordination across all phases, contributing to high-quality outcomes and smooth project execution.

- Civil engineers managing project design, planning, and on-site execution activities.
- Site supervisors overseeing daily operations, workforce coordination, and safety compliance.
- Electricians handling installation, maintenance, and troubleshooting of electrical systems.
- Plumbers managing water supply systems, drainage, and pipeline installations efficiently.
- Steel fixers and carpenters supporting structural framework and finishing construction works.

## Non-Technical Workforce

Our non-technical workforce provides essential support for various construction activities, ensuring smooth operations and timely task completion. They assist skilled teams, handle physical tasks, and contribute to maintaining productivity, safety, and efficiency across all project environments.

- General labor supporting material handling, site cleaning, and basic construction tasks.
- Helpers assisting skilled workers to ensure smooth and efficient workflow operations.
- Loaders managing movement and placement of materials across construction areas.
- Support staff maintaining site organization, cleanliness, and operational readiness daily.
- Workers assisting in excavation, backfilling, and general site preparation activities.

# MEP Services

Baseline Construction Solution delivers fully integrated Mechanical, Electrical, and Plumbing (MEP) services designed to ensure efficient, reliable, and high-performance building systems. Our approach focuses on seamless coordination between all MEP components, enabling optimized functionality, energy efficiency, and long-term operational sustainability. We work across residential, commercial, and industrial projects, providing tailored solutions that meet specific technical and regulatory requirements. Our team of experienced engineers and technicians

ensures precise design, installation, and maintenance of all MEP systems, adhering to international standards and safety protocols. From power distribution and HVAC systems to water supply and fire protection, we ensure every system operates efficiently and safely. By utilizing modern technologies and best practices, we deliver solutions that enhance comfort, performance, and durability. Our commitment to quality and innovation ensures that all MEP installations contribute to the overall success and reliability of every project we undertake.



**System Efficiency:** Ensuring all MEP systems operate at optimal performance, reducing energy use while maintaining reliability.

**Safety:** Adhering to safety standards and regulations ensuring secure installations protecting occupants assets infrastructure.

**Quality:** Maintaining high quality standards in design installation maintenance ensuring reliability consistent performance systems.

## Mechanical Systems Installation

Our mechanical services include installation of HVAC systems, air conditioning, ventilation, ducting, and chilled water systems. We ensure indoor comfort, energy efficiency, and reliable system performance through precise execution and adherence to modern engineering practices.



## Electrical Systems Solutions

We provide electrical solutions including power distribution, lighting systems, cable laying, and panel installations. Our services ensure safe, efficient, and electrical performance, meeting project demands while complying with industry standards and ensuring operational stability.



## Fire Protection Systems

Our fire protection services include the installation of fire alarm systems and firefighting solutions designed to ensure safety and compliance with regulatory standards. We implement advanced systems that detect, control, and respond to fire hazards effectively. Our team ensures proper system integration, regular testing, and maintenance to guarantee reliability during emergencies. By prioritizing safety and risk mitigation, we provide fire protection solutions that safeguard lives, assets, and infrastructure in all types of facilities.

## Plumbing Systems Management

We deliver plumbing solutions covering water supply, drainage, and piping systems. Our services ensure efficient water management, leak prevention, and long-term system reliability.





# Maintenance Services

## Maintenance for Long-Term Operational Excellence

Baseline Construction Solution provides comprehensive maintenance services to ensure the continuous performance, safety, and longevity of facilities and systems. Our approach focuses on preventive and corrective maintenance strategies, minimizing downtime and enhancing operational efficiency. With a team of skilled technicians and engineers, we deliver timely inspections, repairs, and system optimization. We are committed to maintaining high standards of quality and reliability, ensuring that all systems function efficiently while extending the lifecycle of assets and infrastructure.

**Ensuring continuous performance and reliability through proactive maintenance solutions, minimizing downtime, enhancing efficiency, and extending the lifecycle of assets.**



- Preventive maintenance ensuring regular inspections & performance optimization
- Corrective maintenance addressing faults quickly to minimize downtime and disruptions
- Electrical repair services ensuring safe and efficient system functionality always
- Plumbing maintenance solutions maintaining proper water flow and drainage systems

# Facility Services

We offers integrated facility services designed to ensure smooth, safe, and efficient operation of buildings and infrastructure. Our solutions cover comprehensive facility management, combining technical expertise with operational support to maintain high standards of performance. We focus on enhancing functionality, safety, and comfort within facilities while optimizing resource utilization. Through structured service delivery and continuous monitoring, we help clients maintain well-managed environments that support long-term operational success and sustainability.



## Core Functions

- Facility management ensuring smooth and efficient operations
- HVAC maintenance for consistent temperature and air quality
- AMC services providing regular support and performance assurance
- Renovation works improving functionality and upgrading existing facility structures
- Refurbishment services enhancing appearance and extending facility lifecycle effectively



### Renovation Works

Upgrading and improving existing structures to enhance functionality, safety, and aesthetics while ensuring modern standards, efficient space utilization, and long-term durability.



### Refurbishment Works

Restoring and enhancing existing facilities through repairs and improvements, focusing on extending lifespan, improving performance, and maintaining structural.

# Engineering Services



**Delivering precise engineering solutions for efficient project execution**

## 01. Project Planning

---

Project planning ensuring structured execution, resource allocation, and timeline management. We develop detailed schedules, coordinate teams, and align project goals with client requirements.

## 03. Site Supervision

---

Site supervision ensuring strict quality control, safety compliance, and efficient workflow management. Our engineers monitor daily operations, coordinate teams, and ensure adherence to design specifications.

## 02. Cost Estimation

---

Cost estimation providing detailed budgeting, material analysis, and financial forecasting. We ensure cost control, minimize financial risks, and support informed decision-making.

## 04. Technical Documentation

---

Preparation of detailed shop drawings and technical documentation ensuring clarity, and compliance with project standards. We support teams for smooth execution.

# Support Services



Providing complete operational support ensuring efficient, and successful project delivery



We offers support services that enhance project efficiency, coordination, and execution quality. Our team ensures seamless integration of planning, procurement, documentation, and supervision processes to support construction operations. We focus on minimizing delays, optimizing resource utilization, and maintaining strict quality standards throughout the project lifecycle. By providing structured technical and operational support, we enable clients to achieve cost-effective, timely, and well-managed project outcomes while ensuring smooth communication between all stakeholders involved in the construction process.

## Procurement Support

Procurement services ensuring timely sourcing of materials, vendor coordination, and cost optimization. We manage supplier evaluation, quality checks, & delivery scheduling.

## Material Planning

Material planning ensuring accurate estimation, inventory control, and timely availability of materials. We reduce wastage, optimize usage, and align procurement schedules.

## Documentation Support

Documentation services including reports, approvals, and compliance records. We ensure accurate record-keeping, regulatory alignment, and clear communication.

## Coordination

Effective coordination between teams, contractors, and suppliers to ensure seamless communication and workflow integration. We streamline operations, resolve conflicts, and maintain project alignment.



**Ensuring coordination, efficiency, and excellence in project support services**

# Our Valued Clients

Baseline Construction Solution proudly collaborates with a diverse portfolio of reputable clients across various industries, demonstrating our strong commitment to quality, reliability, and excellence. These long-standing partnerships reflect our ability to consistently deliver trusted, efficient, and high-performance construction and engineering solutions, while building confidence and maintaining strong relationships through professionalism, timely execution, and a client-focused approach.





وزارة الاستثمار  
Ministry of Investment

رقم تسجيل الاستثمار (IR) Investment Registration Number (IR) 24925241860  
رقم المنشأة Entity ID 1452012  
تاريخ الإصدار Issue Date 11 Nov 2025  
تاريخ التحديث Update Date 11 Nov 2026  
حالة التسجيل Registration Status Active



Print Date: 12 Nov 2025

## Investment Registration Certificate

## شهادة تسجيل الاستثمار

اسم المنشأة اسم الشركة باسلاين كونستراكتشن سولوشن  
Entity Name Baseline Construction Solution Company  
الكيان القانوني Legal Entity شركة ذات مسؤولية محدودة  
رقم الهاتف Phone Al Khobar  
الموقع Location رأس المال Capital 50000 SAR  
البريد الإلكتروني Email sarmadi97912@hotmail.com

النسبة Percentage	الجنسية Nationality	رقم المستثمر Investor No	أسماء الشركاء Shareholders Names	1
100.0 %	باكستان Pakistan	1452020	باسلاين كونستراكتشن سولوشن الخاصة المحدودة Baseline Construction Solutions Private Limited	

You can verify this document and find more details about the investment registration and its related activities by visiting the Ministry of Investment's website or by scanning the QR code at the top.

يمكنكم التحقق من صحة هذه الوثيقة ومعرفة تفاصيل أكثر عن بيانات التسجيل الاستثماري والأنشطة المرتبطة به من خلال زيارة موقع وزارة الاستثمار أو مسح الرمز أعلاه.



وزارة الاستثمار  
Ministry of Investment



1 of 1

وزارة التجارة  
Ministry of Commerce



## شهادة السجل التجاري

شركة باسلاين كونستراكتشن سولوشن

الرقم الوطني الموحد: 7053165051

تاريخ الإصدار: 30/12/2025

نوع الكيان: شركة ذات مسؤولية محدودة

صفات الشركة: (شخص واحد)

حالة السجل: نشط

البيانات الأساسية للسجل التجاري



7053165051

@ X f v  
mcgovsa

1900  
mc.gov.sa



100261168803844

TIN 3145214271 الرقم المميز

Certificate No. 100261168803844 رقم الشهادة

Certificate date 06/04/2026 تاريخ الشهادة

هيئة الزكاة والضريبة والجمارك  
Zakat, Tax and Customs Authorityالمملكة العربية السعودية  
Kingdom of Saudi Arabia

## شهادة تسجيل في ضريبة القيمة المضافة

## VAT Registration Certificate

تشهد هيئة الزكاة والضريبة والجمارك بأن المكلف أدناه مسجل في ضريبة القيمة المضافة بتاريخ 2026/05/01 م

The Zakat, Tax and Customs Authority certifies that the taxpayer below is VAT registered on 01/05/2026 AD

Taxpayer Name	شركة باسلاين كونستراكتشن سولوشن	اسم المكلّف
VAT Registration Number	314521427100003	رقم التسجيل الضريبي
Effective Registration Date	2026/05/01	تاريخ نفاذ التسجيل
Taxpayer Address	الرابع، 34623، Al Khobar، Ath Thuqbah Dist.	عنوان المكلّف
CR National Number / License / Contract / ID No.	7053165051	الرقم الموحد للسجل التجاري / الرخصة / المقعد / الهوية
Tax Period	ربع سنوي-Quarterly	الفترة الضريبية
First Filing due date	2026/07/31	تاريخ استحقاق أول إقرار ضريبي

**ملاحظة:** كمكلفين مسجلين في ضريبة القيمة المضافة، لا يجوز لكم تحصيل ضريبة القيمة المضافة من عملائكم قبل تاريخ نفاذ التسجيل في الضريبة. و في حال تبين غير ذلك ستقوم هيئة الزكاة والضريبة و الجمارك بتنفيذ الغرامات المستحقة

**Note:** As a VAT registered taxpayer, you are not allowed to collect VAT from your customers prior to the effective date of the tax registration. If otherwise approved, The ZAKAT, Tax and Customs Authority will impose the applicable penalties.



zatca.gov.sa 19993 @zatca\_sa

هذه الوثيقة مستخرجة من النظام الآلي ولا تحتاج إلى توقيع  
و لا يعتد بهذه الشهادة إلا بعد التحقق من موقع الهيئة  
www.zatca.gov.sa



# رؤية VISION 2030

المملكة العربية السعودية  
KINGDOM OF SAUDI ARABIA



**BASELINE**  
CONSTRUCTION SOLUTION  
شركة باسلاين كونستراكشن سولوشن

## Get In Touch !

### Address :

3468 15Th Street, 7828 Ath Thuqbah Dist., AL  
KHOBAR 34623, Kingdom of Saudi Arabia  
+966 59 897 5520  
info@baselinesolutions.com.sa  
www.baselinesolutions.com.sa